

Mathematical Model for Prediction of Metakaolin-Silica Fume High Strength Concrete

T. C. Nwofor
C. Ukpaka

ABSTRACT

The application of mineral additives in concrete mix design for the purpose of obtaining high concrete strength is experimented in this study. A proportion of silica fume, Metakaolin and Superplasticizer are added to conventional cement-aggregate mix in different proportions and a compressive strength of about 60N/mm² is targeted. Multiple regression models were then applied to the experimental data and predictive models obtained for 7, 14 and 28 days. The basic observation seen by introducing two kinds of mineral additives is that 28th day strength of concrete with metakaolin gave a strength of 76.04N/mm² at 10% replacement level while silica fume produced a 28th day strength of 73.76N/mm² at the same optimum replacement level with an average error of about 3.85% estimated between the experimental and predicted data.

Keywords: *Metakaolin, Superplasticizer, High Strength Concrete, Silica fume*

INTRODUCTION

The need to have high strength structural elements to carry loads especially in tall structures without necessarily increasing the size of the members has necessitated the investigation of the introduction of supplementary cementation materials sometimes called mineral additives or pozzolans. Hence, it is important that concrete gains good early strength by introducing these mineral additives compared to ordinary concrete production. High strength concrete has extraordinary rheological properties and hence the development of strength is more complex in nature majorly due to the physiochemical effects of the pozzolans that would be added in most times to achieve such high strength (Aitein, 2003, 2000; Zain, Safiuddin and Yusof (1999); Kapelko A., Kapelko M. and Kapelko R., 2013). Some good attributes of high strength concrete includes: high workability, high modulus of elasticity, high density, low permeability and high resistance to chemical attack (Neville and Aitein, 1998). According to Dinakar, Pradosh and Sriram (2013), the European Standard EN 206-2000 and the American Concrete Institute (ACI) define high-performance concrete as specially designed concrete with

T. C. Nwofor is a Senior Lecturer, while C. Ukpaka is a Post Graduate Student. Both are in the Department of Civil Engineering, University of Port Harcourt, Port Harcourt, Rivers State, Nigeria. E-mail: templenwofor@yahoo.com.



one or more attributes as listed above, enhanced through the selection of component materials in adequate mix proportions aimed at producing concrete with compressive strength above 60N/mm² at the design age of 28days. From the foregoing high-strength concrete can be made with a combination of cement which acts as a cheap binder and any mineral components such as slag, silica fume, metakaolin, fly ash, fillers e.t.c. (Aitein, 2003; Dinakar, Pradosh and Sriram, 2013).

Silica fume is known to improve the mechanical property and durability of concrete because it can act as filler which fits into space between concrete grains, similar to what cement-sand paste does in the concrete mix. Hence it provides adequate packing of the concrete particles (Basu, 2003; Abdul and Wong, 2005). Metakaolin is a profoundly effective pozzolana and responds quickly as it is produced from calcinations (Basu *et al.*, 2000; Tiwari and Bandyopadhyay, 2003). It has the ability to supplement silica fume in areas where it is not readily available and hence becomes very costly.

The goal of this study is to develop a mathematical model based on a regression approach for prediction of compressive strength of above 60N/mm² for the selected additives. Considering that the prediction of strength of high-strength concrete is difficult due to the complex nature of the strength gaining process, several researchers have developed models to predict the compressive strength where recent studies have related the water-cement ratio and the percentage content of the pozzolanic material present (Kapelko A., Kapelko M. and Kapelko R. (2010); Zain and Abd, 2009; Popovics and Ujhelyi, 2008). In this study the improvement in strength obtained by the addition of two kinds of mineral additives, silica fume and metakaolin is related and predicted through a mathematical model having in mind that most design procedures to predict strength are based on normal cement-aggregate concrete.

MATERIALS AND METHOD

The materials utilized in this experiment include water, cement, fine and coarse aggregates and mineral pozzolans of silica fume and metakaolin. Metakaolin was obtained from Kent and Partners Limited, Onitsha, while silica fume was gotten from Tohabs Engineering Company, all in Nigeria. The physical properties of specific gravity of the cement, metakaolin and silica fume were found to be 3.12, 2.55 and 2.20 with an average particle size 24, 9.3, and 95.5um respectively. The coarse aggregate used in this investigation were well graded with a normrinal size of 10-20mm with a specific gravity of 2.60, while the fine aggregates which constitutes of river sand was classified in zone 2 with a specific gravity of 2.67. A summary of the chemical composition of the cementitious material is given in Table 1. A superplasticizer consisting of 20 per cent solids with a specific gravity of 1.09 was used. The water used was clean at a temperature of about 29°C. A proper mix design procedure was carried out to produce the different mass proportioning as seen in Table 2.

Table 1: Chemical Composition of Cement, Silica Fume and Metakaolin

%	SiO ₂	Al ₂ O ₃	CaO	FeO ₃	MgO	Na ₂ O	K ₂ O	P ₂ O ₅	TiO ₂	MnO	LOI
Cement	20.99	6.19	65.96	3.86	0.20	0.17	0.60	0.05	0.40	0.06	1.53
MK	57.40	35.26	0.02	0.94	0.18	<0.01	3.17	0.09	0.43	<0.01	2.52
SF	92.06	0.48	0.40	2.11	0.63	0.28	1.24	0.02	<0.01	0.23	2.54

Source: Experimentation, 2016

Table 2: Mix Proportions for Different Specimens

SPECIMEN	% replacement using silica fume or metakaolin		Cement	Fine Aggregate	Coarse Aggregate	Water	Super plasticizer	silica fume or
metakaolin	metakaolin	W/b	(kg)	(Kg)	(kg)	(kg)	(kg)	(kg)
MC	0	0.29	18.27	27.63	37.26	5.13	-	-
M0	0	0.29	18.27	27.63	37.26	5.13	0.18	-
M1S	5	0.29	17.37	27.63	37.26	5.13	0.18	0.91
M1M	5	0.29	17.37	27.63	37.26	5.13	0.18	0.91
M2S	10	0.29	16.47	27.63	37.26	5.13	0.18	2.04
M2M	10	0.29	16.47	27.63	37.26	5.13	0.18	2.04
M3S	15	0.29	15.58	27.63	37.26	5.13	0.18	2.75
M3M	15	0.29	15.58	27.63	37.26	5.13	0.18	2.75
M4S	20	0.29	14.69	27.63	37.26	5.13	0.18	3.65
M4M	20	0.29	14.69	27.63	37.26	5.13	0.18	3.65
M5S	25	0.29	13.79	27.63	37.26	5.13	0.18	4.57
M5M	25	0.29	13.79	27.63	37.26	5.13	0.18	4.57

MS indicates mix with silica fume content and super plasticizer

MM indicates mix with metakaolin content and super plasticizer

MC indicates control mix without any super plasticizer

MO indicates mix with addition of super plasticizer and no mineral additives specimens of concrete for 72 moulds of size 150 x150mm indicating a total of six moulds for each specimen (three each for the 7 and 28 days compressive test). The ordinary cement was replaced by the mineral additives at 5, 10 and 15% for a constant water-cement ratio of 0.29 which is made possible through the addition of the super plasticizer. Source: Experimentation, 2016

Mathematical Model for Simulation of Metakaolin, Silica Fume High Strength Concrete

In recent research, effort is placed in developing mathematical model for prediction of strength of concrete. The common regression equation used for this purpose of simulation of compressive strength of concrete is described as follows:

$$f = b_0 + b_1 \frac{w}{c} \quad (1)$$

Where,

f = Compressive strength of concrete

b_0, b_1 = Empirical coefficients

$\frac{w}{c}$ = Water/Cement ratio



The application of this concept in Equation 1 is based on a linear regression model for the prediction of the compressive strength of normal concrete which is a progression from Equation 2 originally developed by Abram (1918).

$$f = \frac{A}{B^{w/c}} \quad (2)$$

Where,

f = Compressive strength of concrete; A and B are empirical coefficients

$\frac{w}{c}$ = Water-cement ratio

It is common knowledge that the compressive strength of concrete decreases linearly as the water-cement ($\frac{w}{c}$) increases, hence the strength of concrete increases linearly with cement-water ratio ($\frac{c}{w}$), which modifies the Equation 2 to 3.

$$F = A + B \quad (3)$$

For the purpose of this research, Equation 1 to 3 is modified as follows to incorporate all the constituents used in this investigation;

$$f = b_0 + b_1 \frac{w}{c} + b_2 FA + b_3 CA + b_4 SP + b_5 MA \quad (4)$$

Equation 4 can also be written as

$$\log f = \log b_0 + \log b_1 \frac{w}{c} + \log b_2 FA + \log b_3 CA + \log b_4 SP + \log b_5 MA \quad (5)$$

Equation 5 is gotten by applying natural log to both sides of Equation 4. However, Equation 5 is then reverse back to simulate the compressive strength of concrete which is the dependent variable in the modify equation to give

$$f = b_0 \frac{w}{c}^{b_1} \cdot FA^{b_2} \cdot CA^{b_3} \cdot SP^{b_4} \cdot MA^{b_5} \quad (6)$$

Where,

FA = quantity of fine sand aggregate

CA = quantity of coarse aggregate

SP = quantity of superplasticizer

MA = quantity of mineral additive (metakaolin or silica fume)

The coefficients b_0, b_1, b_2, b_3, b_4 and b_5 stand for partial regression coefficients of f on $\frac{w}{c}$, when other variables are held constant.

This research investigation established the model for compressive strength of concrete at 7, 14 and 28 days respectively in Equations 7, 8 and 9 by obtaining the adequate regression coefficients.

$$F_7 = 0.28 + 148.2 \frac{w}{c} - 0.05FA - 0.07CA + 2.15SP + 0.78MA. \quad (7)$$

$$F_{14} = 0.53 + 208.35 \frac{w}{c} - 0.11FA - 0.04CA - 32.96SP + 7.17MA. \quad (8)$$

$$F_{28} = 0.67 + 208.84 - 0.25FA + 0.13CA + 44.82SP + 7.17MA. \quad (9)$$

RESULTS AND DISCUSSION

Specimens were tested to determine the characteristic compressive strength of high strength concrete. The cubes were loaded in a compressive testing machine at the rate of 0.3 N/mm²/s until failure. The results are tabulated as shown in Table 3, which shows that increase in silica fume and Metakaolin content, increased the compressive strength of concrete with optimum replacement level at 10% after which the compressive strength starts to decline with further increase in replacement level. Tables 4 and 5, Figures 1, 2 and 3 give the relationship between the laboratory determined compressive strength of concrete and the modeled compressive strength of concrete. The compressive strength results obtained in the study reflects that high concrete strength can be achieved from the inclusion of additives such as silica fume and metakaolin at a reduce water-cement ratio aided by a super plasticizer to enhance the workability of the concrete materials.

Table 3: Compressive strength results for specimens

MIX NO	Supplementary	Cube compressive strength of concrete N/mm ²		
		7days	14days	28days
Mc	cementitious materials	18.3	30.31	34.06
M0	-	36.35	56.11	59.06
M1	-			
M1S	Silica fume	37.60	58.52	62.67
M1M	Metakaolin	42.76	62.74	68.96
M2	-			
M2S	Silica fume	44.25	69.03	73.76
M2M	Metakaolin	47.14	72.03	76.04
M3	-			
M3S	Silica fume	42.18	65.08	69.16
M3M	Metakaolin	45.81	68.78	73.90
M4	-			
M4S	Silica fume	40.20	63.64	66.82
M4M	metakaolin	44.45	67.70	71.70
M5	-			
M5S	Silica fume	38.49	56.73	63.11
M5M	Metakaolin	44.03	65.69	69.74

Source: Experimentation, 2016

Table 4: Regression coefficients for 7, 14 and 28 days for formulation of models

Coefficient	7 Days	14 Days	28 Days
b ₀	0.28	0.53	0.67
b ₁	148.2	208.35	208.84
b ₂	-0.05	0.11	0.25
b ₃	-0.07	-0.04	0.13
b ₄	2.33	1.47	4.29
b ₅	2.15	32.96	44.82
b ₆	0.78	7.17	7.17
Coefficient of Correlations	0.63	1.0	0.33

Source: Experimentation, 2016



Table 5: Comparison of experimental and predicted results from models

Mix No	Supplementary Cementous Material	Experimental Results			Predicted Results		
		7days	14days	28days	7days	14days	28days
MC	-	18.39	30.31	34.06	23.09	35.03	40.90
MO	-	36.35	56.11	59.60	39.69	58.43	64.93
M1			5%			15%	
M1SF	Silica Fume	37.60	58.52	62.67	40.62	65.02	71.79
M1M	Metakaolin	42.76	64.74	68.96	40.62	66.02	73.70
M2			10%			10%	
M2SF	Silica Fume	44.25	69.03	73.76	47.50	69.31	77.28
M2M	Metakaolin	47.14	72.03	76.04	41.50	70.41	79.10
M3			15%			20%	
M3SF	Silica Fume	42.18	65.73	69.16	43.54	63.38	67.58
M3M1	Metakaolin	54.81	68.78	73.90	42.54	65.34	68.24
M4SF	Silica Fume	40.20	63.64	66.82	42.47	61.97	64.65
M4M	Metakaolin	44.45	67.70	71.70	43.47	67.07	65.04
M5SF	Silica Fume	38.49	59.73	63.11	39.43	60.25	62.01
M5M	Metakaolin	44.03	65.69	69.74	44.43	63.25	62.32

Source: Experimentation, 2016

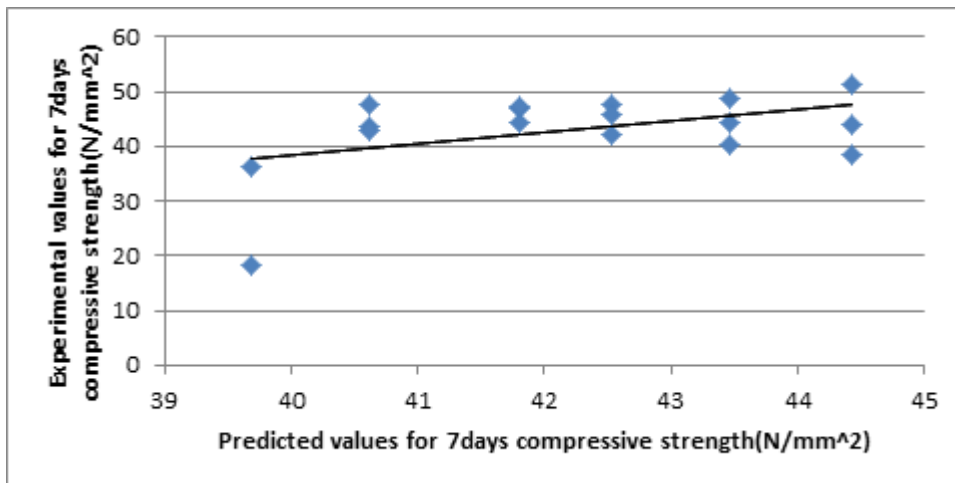


Figure 1: Plot of relationship between experimental and predicted values for 7days compressive strength

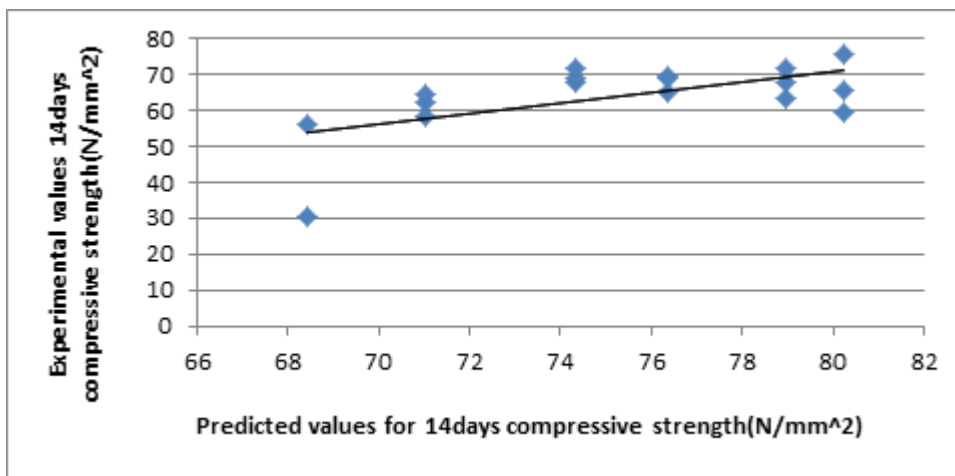


Figure 2: Plot of relationship between experimental and predicted values for 14days compressive strength



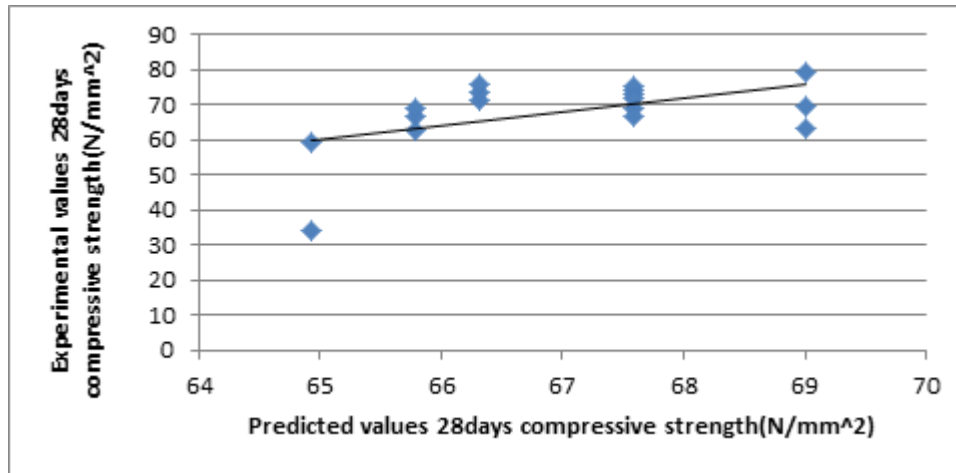


Figure 3: Plot of relationship between experimental and predicted values for 28days compressive strength

CONCLUSION

The application of mineral additives in concrete mix design for the purpose of obtaining high concrete strength was examined in this study. A proportion of silica fume, Metakaolin and Superplasticizer were added to conventional cement-aggregate mix in different proportions and a compressive strength of about 60N/mm² was targeted. Multiple regression models were then applied to the experimental data and predictive models obtained for 7, 14 and 28 days. The compressive strength results obtained in the study reflect that high concrete strength can be achieved from the inclusion of additives such as silica fume and metakaolin at a reduced water-cement ratio aided by a super plasticizer to enhance the workability of the concrete materials. The following specific conclusions are drawn from the study.

- i. The value for compressive strength observed for mixes with additives gained higher 7th day strength.
- ii. The 28th day strength of concrete with metakaolin gave a strength of 76.04N/mm² at 10% replacement level while silica fume produced a 28th day strength of 73.76/mm² at the same optimum replacement level.
- iii. The average error between the experimental and predicted data was about 3.85%.

REFERENCES

- Abdul, R. H. and Wong, H. S.** (2005). Strength estimation model for high-strength concrete incorporating metakaolin and silica fume. *Cement Concrete Research*, 35(4), 688–695.
- Aitein, P. C.** (1998). *High performance concrete*. London: E and FN SPON.
- Aitein, P. C.** (2000). Cement yesterday and today. Concrete of tomorrow. *Cement and Concrete Research* 30, 1349-1359.
- Aitein, P. C.** (2003). The durability characteristics of high-performance concrete: a review. *Cement and Concrete Research*, 25, 409-420.

- Basu, P. C.** (2003). High performance concrete. In Proceedings INAE national seminar on engineered building materials and their performance, 426–450.
- Basu P. C., Mavinkurve S., Bhattacharjee K. N., Deshpande Y. and Basu S.** (2000). High reactivity metakaolin: A supplementary cementitious material. In Proceedings ICIAAsian conference on ecstasy in concrete, 20–22 Nov, Bangalore, India, 237–436.
- Dinakar P., Pradosh K.S. and Sriram G.** (2013). Effects of metakaolin content on the properties of high strength concrete. *International Journal of Concrete Structures and Materials*, 7(3), 215-223.
- European Standard** (EN 206-1:2000). Concrete-Part 1: Specification, performance, production and conformity. Brussels, 2000.
- Kapelko A., Kapelko M. and Kapelko R.** (2010). *Modeling compressive strength of high-performance concrete with multiple regression. Advances and Trends in Structural Engineering, Mechanics and Computation*. London: Taylor and Francis Group.
- Neville, A. and Aitein, P. C.** (1998). High performance concrete-an overview. *Materials and Structures*, 31, 111-117.
- Popovics, S. and Ujhelyi, J.** (2008). Contribution to the concrete strength versus water-cement ratio relationship. *Journal of Materials in Civil Engineering* 20(7), 459-463.
- Tiwari, A. K. and Bandyopadhyay, P.** (2003). High performance concrete with Indian metakaolin. In International symposium on innovative world of concrete, 19–21 September. Pune: Indian Concrete Institute.
- Zain, M. F. M. and Abd, S. M.** (2009). Multiple regression model for compressive strength prediction of high performance concrete. *Journal of Applied Sciences*, 9(1), 155-160.
- Zain M. F. M., Safiuddin M. and Yusof K. M.** (1999). A Study on the properties of freshly mixed high performance concrete. *Concrete and Concrete Research*, 29, 1427-1432.